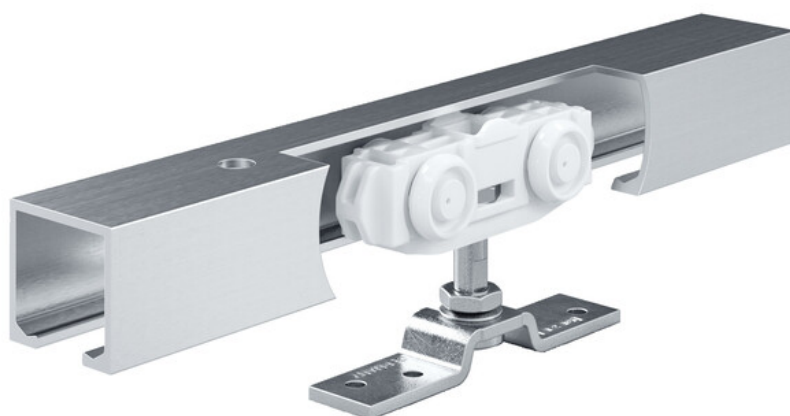


Product data sheet

Rollan 40 NT complete set for wooden door leaves



Sliding door fitting for timber leaves

AREAS OF APPLICATION

- For leaf weights up to 40 kg
- For wall and ceiling installation
- For single-leaf metal and timber doors



Rollan 40 NT complete set for wooden door leaves

PRODUCT FEATURES

- Sliding door fitting for timber leaves with up to 40 kg leaf weight
- Needs one complete set per leaf

TECHNICAL DATA

Productname	Rollan 40 NT complete set for wooden door leaves
Leaf material	Plastic, Metal, Wood
Leaf weight (max.)	40 kg
Number of leaves	1-leaf, 2-leaf
Leaf width (min.)	500 mm
Leaf width (max.)	1420 mm
Test cycles	25000
Corrosion protection class	1
Type of installation	Wall, Ceiling
Access for all	according to DIN 18040

VARIANTS / ORDER INFO

Designation	Description	Ident-No.	Dimensions	Leaf width (min.)	Leaf width (max.)
GEZE Rollan 40 NT Complete Set	Set for wall and ceiling installation with timber leaf standard, up to 40 kg leaf weight -plain bearing-	160405	1150 mm	500 mm	590 mm
GEZE Rollan 40 NT Complete Set	Set for wall and ceiling installation with timber leaf standard, up to 40 kg leaf weight -plain bearing-	160407	1800 mm	500 mm	920 mm
GEZE Rollan 40 NT Complete Set	Set for wall and ceiling installation with timber leaf standard, up to 40 kg leaf weight -plain bearing-	160409	2350 mm	500 mm	1190 mm
GEZE Rollan 40 NT Complete Set	Set for wall and ceiling installation with timber leaf standard, up to 40 kg leaf weight -plain bearing-	160410	2800 mm	500 mm	1420 mm
GEZE Rollan 40 NT Complete Set	Set for wall and ceiling installation with timber leaf standard, up to 40 kg leaf weight -plain bearing-	160406	1650 mm	500 mm	840 mm
GEZE Rollan 40 NT Complete Set	Set for wall and ceiling installation with timber leaf standard, up to 40 kg leaf weight -plain bearing-	160408	1900 mm	500 mm	970 mm

Rollan 40 NT complete set for wooden door leaves



ACCESSORIES

DOOR STOP

End stop for sliding leaves



Designation	Ident-No.	Fitting No.
Door stop	000342	2-66

FLUSH PULL, 15-80 MM WOOD *

Flush pull for timber leaf



Designation	Description	Ident-No.	Colour
Flush pull, 15-80 mm wood *	Outer diameter 60 mm, specify leaf thickness when ordering	127614	Stainless steel

ROLLAN 80 NT SOFTSTOP SET, DAMPED ON ONE SIDE, UP TO 40 KG

Rollan SoftStop for damping on one side with pull-in, can be used on both sides



Designation	Description	Ident-No.	Leaf weight (max.)
Rollan 80 NT SoftStop set, damped on one side, up to 40 kg	The set includes: 1 x damping unit, 1 x release device. Requirements for damping on both sides = 2 pieces.	160360	40 kg

Rollan 40 NT complete set for wooden door leaves

CLIP-ON COVER SET 100 SPACER BRACKET

Spacer bracket for clip-on cover 100



Designation	Description	Ident-No.	Material
Clip-on cover set 100 spacer bracket	6 pieces, increase lateral distance of clip-on cover by 7.5 mm each, incl. 6 screws 4.5 x 10 mm T20. For use with Perlan AUT-NT as well as for leaf thicknesses from 30 mm	137754	Plastic

CLIP-ON COVER SET 100 PLASTIC CLIP

Plastic clip for spacer bracket for clip-on cover 100



Designation	Description	Ident-No.	Material
Clip-on cover set 100 plastic clip	10 pieces, for the direct attachment of the clip-on cover 100 on the track or the spacer brackets	137863	Plastic

HEIGHT COMPENSATION MECHANISM / CEILING DISTANCE SET, WITH VARIABLE ADJUSTMENT

Height compensation with variable adjustment for ceiling installation of tracks



Designation	Description	Ident-No.	Material
Height compensation mechanism / ceiling distance set, with variable adjustment	6 pieces, height compensation mechanism with variable adjustment from 13 mm to 18 mm. For use for ceiling mounting using clip-on cover 100/145 as well as for general use on uneven ceilings	138099	Plastic

Rollan 40 NT complete set for wooden door leaves



FLUSH PULL, ANGULAR *

Stainless steel shell in rectangular design 128 x 82 mm



Designation	Description	Ident-No.	Colour	Dimensions	Type of installation
Flush pull, angular	Stainless steel shell in rectangular design 128 x 82 mm	169808	Satin stainless steel	128 x 82 x 20 mm	Door leaf installation

DOOR STOPPER 01

Semicircular floor mounted door stopper made of stainless steel



Designation	Description	Ident-No.	Colour	Dimensions	Type of installation
Door stopper 01	Floor mounted door stopper, crescent	169797	Satin stainless steel	25 mm	Floor

FLUSH PULL, OVAL *

Stainless steel shell in oval design 40 x 120 mm



Designation	Description	Ident-No.	Colour	Dimensions	Type of installation
Flush pull, oval	Stainless steel shell in oval design 40 x 120 mm	169809	Satin stainless steel	120 x 40 x 14.5 mm	Door leaf installation

Rollan 40 NT complete set for wooden door leaves

FLUSH PULL, ROUND *

Stainless steel shell in round design, 65 mm diameter



Designation	Description	Ident-No.	Colour	Dimensions	Type of installation
Flush pull, round	Stainless steel shell in round design, 65 mm diameter	169810	Satin stainless steel	16 mm	Door leaf installation

DOOR STOPPER 04 *

Floor mounted door stopper made of stainless steel



Designation	Description	Ident-No.	Colour	Dimensions	Type of installation
Door stopper 04 *	Floor mounted door stopper	169800	Satin stainless steel	40 mm	Floor

PULL HANDLE D-SHAPE *

Stainless steel pull handle pair



Designation	Description	Ident-No.	Colour	Pane thickness	Type of installation
Pull handle D-shape *	Push handle set for door thicknesses up to 50 mm and 10-12 mm pane thickness (set) - diameter: 22 mm; hole spacing: 300 mm	169819	Satin stainless steel	10 - 12 mm	Door leaf installation, Glass installation
Pull handle D-shape *	Push handle set for door thicknesses up to 50 mm and 10-12 mm pane thickness (set) - diameter: 19 mm; hole spacing: 200 mm	169818	Satin stainless steel	10 - 12 mm	Door leaf installation, Glass installation
Pull handle D-shape *	Push handle set for door thicknesses up to 50 mm and 10-12 mm pane thickness (set) - diameter: 19 mm; hole spacing: 150 mm	169817	Satin stainless steel	10 - 12 mm	Door leaf installation, Glass installation
Pull handle D-shape *	Push handle set for door thicknesses up to 50 mm and 10-12 mm pane thickness (set) - diameter: 25 mm; hole spacing: 300 mm	169820	Satin stainless steel	10 - 12 mm	Door leaf installation, Glass installation

Rollan 40 NT complete set for wooden door leaves

PULL HANDLE H-SHAPE

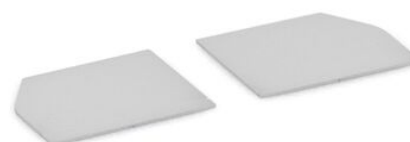
Stainless steel pull handle pair



Designation	Description	Ident-No.	Colour	Pane thickness	Type of installation
Pull handle H-shape	Push handle set for door thicknesses up to 50 mm and 10-12 mm pane thickness (set) - diameter: 25 mm; hole spacing: 300 mm; total length: 400 mm	169822	Satin stainless steel	10 - 12 mm	Door leaf installation, Glass installation
Pull handle H-shape *	Push handle set for door thicknesses up to 50 mm and 10-12 mm pane thickness (set) - diameter: 25 mm; hole spacing: 250 mm; total length: 350 mm	169821	Satin stainless steel	10 - 12 mm	Door leaf installation, Glass installation
Pull handle H-shape *	Push handle set for door thicknesses up to 50 mm and 10-12 mm pane thickness (set) - diameter: 32 mm; hole spacing: 600 mm; total length: 800 mm	169823	Satin stainless steel	10 - 12 mm	Door leaf installation, Glass installation
Pull handle H-shape *	Push handle set for door thicknesses up to 50 mm and 10-12 mm pane thickness (set) - dDiameter: 32 mm; hole spacing: 1200 mm; total length: 1400 mm	169824	Satin stainless steel	10 - 12 mm	Door leaf installation, Glass installation

END CAP SET CLIP-ON COVER 100 *

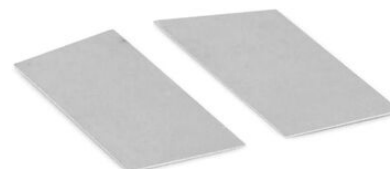
End cap for clip-on cover 100, slim version



Designation	Description	Ident-No.	Colour
End cap set clip-on cover 100 *	2 pieces, narrow version, for use without spacer bracket	137869	according to RAL
End cap set clip-on cover 100 *	2 pieces, narrow version, for use without spacer bracket	137867	Stainless steel optic
End cap set clip-on cover 100 *	2 pieces, narrow version, for use without spacer bracket	137865	EV1

END CAP SET CLIP-ON COVER 100 *

End cap for clip-on cover 100, large version





Rollan 40 NT complete set for wooden door leaves

Designation	Description	Ident-No.	Colour
End cap set clip-on cover 100 *	2 pieces, wide version, for use with spacer bracket	137866	Stainless steel optic
End cap set clip-on cover 100 *	2 pieces, wide version, for use with spacer bracket	137864	EV1
End cap set clip-on cover 100 *	2 pieces, wide version, for use with spacer bracket	137868	according to RAL

* The products designated above may vary in form, type, characteristics, function, or availability depending on the country. Please get in touch with your GEZE contact person if you have any questions.